

PROFIL RAKOVO spol. s r.o.



INTRODUCTION OF THE COMPANY *Offer for cooperation*



THE YEAR 2015

The company PROFIL RAKOVO, spol. s r.o., as one of the first companies in Slovakia has started production of longitudinally welded steel pipes and closed thin-walled square and rectangular profiles.

In 2006, the production was extended to the marking of our products by embossed text, or by identification labels, according to customer orders. Signage can be unilaterally transferred to the mutually opposite walls.

The high quality of finished products is also evidenced by the fact that in 2008, obtaining SKQS certificate of quality management system and system of environmental management, in accordance with the requirements of the international standard ISO 9001:2000, ISO 14001:2004 and ISO 16949 / 2002, with an emphasis on slimming the manufacture, environmental compliance and continuity of production and processing of other products for the automobile industry.

At the same time in various stages of construction of the means of production extends the range of products, especially in view of the finishing profile, heat treatment and further improvements to the requirements of business partners in Slovakia and the markets in neighboring countries. The main business objective is the production of longitudinally welded steel pipes and closed thin-walled sections of square and rectangular cross-section with a thickness of only 3.65 mm. Our products are supplied in exact lengths ranging from 4.000 mm to 12.000 mm and can be surface-modified zinc, where the max. content of Si is 0.03%.

Approximately 60% of our production is for our foreign partners. The company has important foreign partners in Germany, Austria, Czech Republic, Italy, Hungary, Poland, Denmark and in the Netherlands.

The main object is to modernize the production process with the possibility of extension of assortment, with focus on improving the provision of services, which will ensure competitiveness in the market for metallurgical and materials and comply with the requirements of customers.

The specific objective is to make production line capable of producing the shaped profiles of the different parameters and thus respond to the demand for quality products. Modernization of production line technology longitudinally welded steel pipes and closed thin-walled sections of square and rectangular cross-section and increasing the size and scope, automatization and the diversification of the open sections extend the product range to open sections allow us to respond immediately to the demand of individual products.

Another information about the current assortment of products are available on the Web site of the company www.profil.sk

REFERENCES QUALITY PRODUCTS:

Slovak market

*Ferona Slovakia, a.s.,
Raven a.s., Ferostav
spol. s r.o., Metalco
Holíč s.r.o., Sillimex*

Czech market

*FERONA, a.s.,
FAVEX TRADE, s.r.o.,
Ferrum Plzeň, spol. s r.o.,
HESCO, s.r.o.,
Intersteel s.r.o.,
Krohm Stahl Internacional
GmbH Ostrava,
Milfor Steel s.r.o.,
RENA CZ, s.r.o.*

European market

*ATS Sp. z o.o.,
"CABLEX" P.P.U.H. STANISŁAV CHOLAŚ,
CMC (Europe) AG,
ESTA Stahlhandel GesmbH,
ISC Steel Company International GmbH,
JEPSEN STAHL GmbH,
Manfred Reiner,
Röhren- und Stahlhandel GmbH,
NYSTAL S.A.,
PRO-FERRODEX Sp. z o.o.,
Sidergoffi S.r.l.,
TESKO STEEL Sp. z o.o.,
TOM-FERR Rt.,
WSK Stahlhandel GmbH.*

OFFER FOR COOPERATION

- **Participation in the modernization of production**
- **Participation in the secondary-production**
- **Developing a logistics center in the region for transit**
- **Rent of buildings and lands for the purpose of business**
- **Stock premises with engineering networks**



1. Participation in the modernization of production.

Company PROFIL RAKOVO, spol. s r.o. acts as a producer of longitudinally welded steel pipes and profiles, thin-walled square and rectangular cross-section at the market of metallurgical material for 10 years.

Technology for the production of pipes was supplied by the Austrian company Voest-Alpine Industrieanlagenbau GmbH in 1997

The current product range:

- 1. Steel tubes longitudinally welded smooth**
 - from the average 22 mm to 60 mm
 - wall thickness from 1,80 mm to 3,65 mm
 - according to STN 425723, DIN 2458
- 2. longitudinally welded steel tubes threaded**
 - from the average ½" (21,3 mm) to 2" (60,3 mm)
 - wall thickness from 1,80 mm to 3,65 mm
 - according to STN 425710, DIN 2440
- 3. longitudinally welded closed square profiles**
 - from the size 20x20 mm to 50x50 mm
 - wall thickness from 1,80 mm do 3,65 mm
 - according to STN 426935, DIN 2395-1
- 4. longitudinally welded rectangular closed profiles**
 - from the size 20x30 mm to 40x60 mm
 - wall thickness from 1,80 mm do 3,65 mm
 - according to STN 426936, DIN 2395-1



Modernization of lines ensure higher production volume and expand the range produced, the range and quantity will be determined based on demand. Ability to adapt to market requirements and the projected increase in production volume should lead to greater competitiveness of company and strengthening domestic and foreign markets, which should be reflected in the increase in revenues and number of contracts.

Efficiency, slimming of production and automatization will ensure the cost reduction, competitiveness, and increase revenues from the sale of finished products. The main expected benefit is a progressive increase of production, increase sales by expanding the range of open and closed profiles, while expanding the market.

By amendment and completion of the product range we will extend the number of our customers and also will extend the range of clients in terms of further appreciation of our finished products.

The company PROFIL RAKOVO, spol. s r. o., with the experience of eleven years, has a good market knowledge with commercial activities in steel products, engineering and metallurgical production.



Subject of modernization of the production process is directed to the following areas:

- *automatization of the stacking frame*
- *reconstruction of production line to production of open profiles of various shapes*
- *automatization of preparation of tape*
- *divider of finished products as a part of the production line*
- *CNC bender of finished products for the automobile industry*
- *punch of material for lightweight open profiles*
- *packaging unit of finished products*
- *realization of the project for the production of shaped profiles of wall thickness to 8 mm and a width of strip to 700 mm*

2. Participation in the secondary-production.

It is necessary to demonstrate, that the company with its metallurgical focus can be a suitable partner for the production of final consumer products (secondary-production).

Possibilities of cooperation in the secondary-production :

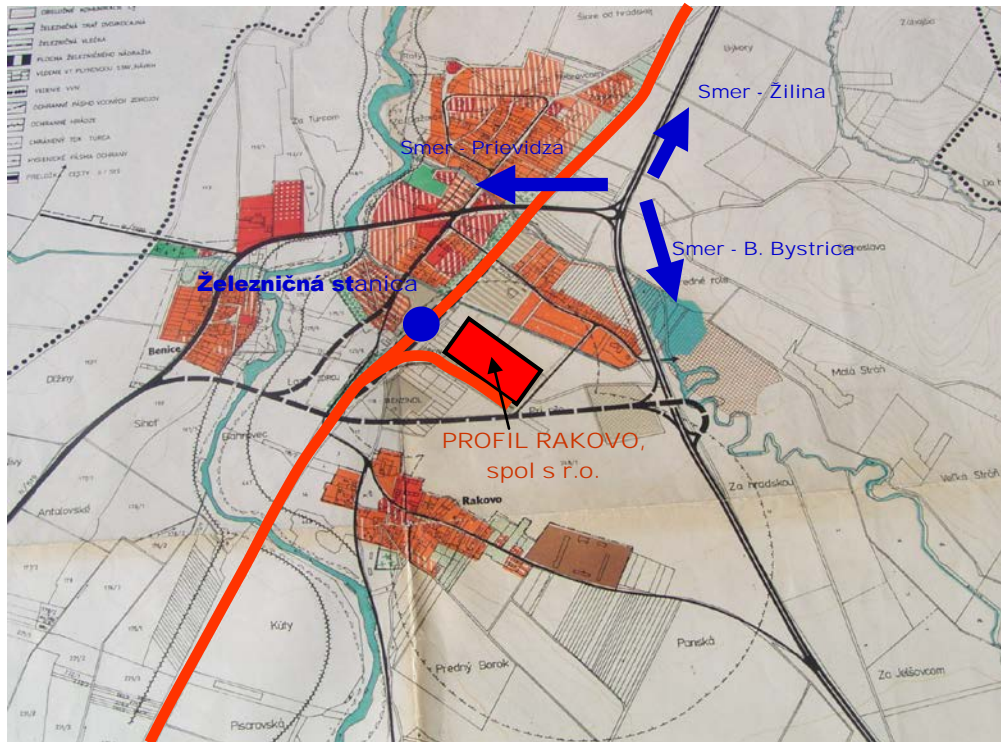
- **Building** – scaffolding, pipes, building profiles, highway system, construction of roof systems,
- **Transportation** – railings, beams to a camera system, traffic signs, cars,
- **Engineering** - gates, fences, benches, poles, carriers of final products, conveyor systems, steel construction, rack systems,
- **Agriculture** – supporting the construction of shelters, construction of decks, accessories for agricultural, equipment and s.o.,
- **Other use** – construction of grandstands, beams lamps, Billboards,...

3. Developing a logistic center in the region for transit.

The seat of Profil Rakovo, spol. s r.o. and the place of its business activities is the Rakovo, situated 8 km south of Martin in the County of Žilina. Region of Martin is located 30 km from the strategic transport junction - county town Žilina.



Company Profil Rakovo, spol. s r.o., is located close to transport junction, which determines the direction of Prievidza, Banská Bystrica and Žilina - the central town of north-west region of Slovakia. A railway siding is located directly in the area of company, so it can provide railway transport directly to the railway-station in Príbovce, district of Martin. Transport options in the area of Profil Rakovo, spol. s r.o., is ensured by using road transport as well as railway transport, which is shown on the situational traffic map.



4. Rent of buildings and lands for the purpose of business

The area of the company is equipped with engineering company networks, which create favorable conditions for the various business sectors of the economy.

Property of the company : PROFIL RAKOVO, spol. s r.o.

A) Production - storage premises with a steel skeleton construction.

Foundations are concrete serif and belt with a horizontal waterproofing. Vertical support structure is a steel skeleton in the longitudinal direction of 12 modules with space between the two modules 4.5 m and 2 modules with axial length of 12.0 m. The outer wall is filling in masonry 25 cm thick. Low gabled roof, roof structure is of steel truss roof ties, covering the corrugated galvanized steel.

Total area :	6 117 m²
Number of buildings:	5 x
Unit rental rate:	30 EUR / m² / year
Payment for energies:	by sampling

B) Production - storage premises with roof prefabricated elements.

Basements are reinforced with horizontal belt and waterproofing. The center of the hall is designed as one floor reinforced concrete frame with ZIPP modulus 6.0 x 6.0 m to 12.0 m spans. On both sides of the hall are built outhouses with social facilities, workshops and stocks. External walls with masonry filler is 25 cm thick. The roof over the central part of the floor is gabled, over the outhouses is pent and flat weathered roof.

Total area:	3 507 m²
Number of buildings:	2 x
Unit rental rate:	40 EUR / m² / year
Payment for energies:	by sampling

C) Administrative premises.

Basements are concrete strips with a horizontal waterproofing. Both parts of the external walls are built in 35 cm thick. The ceilings are made of prefabricated ceiling panels SPIROL, with the flat plastering under view. In 1997 was built a new roof structure with a low saddle-shaped wooden roofs and tiles made of galvanized steel.

Total area:	1 245 m²
Number of buildings :	2 x
Unit rental rate:	50 EUR / m² / year
Payment for energies:	by sampling

D) Vacant plots

Grassland with communications in the area of *company*.

Total area:	32 648 m²
Unit rental rate:	20 EUR / m² / year
Payment for energy:	by sampling

5. Stock premises with the engineering networks.

SITUAČNÝ PLÁN

